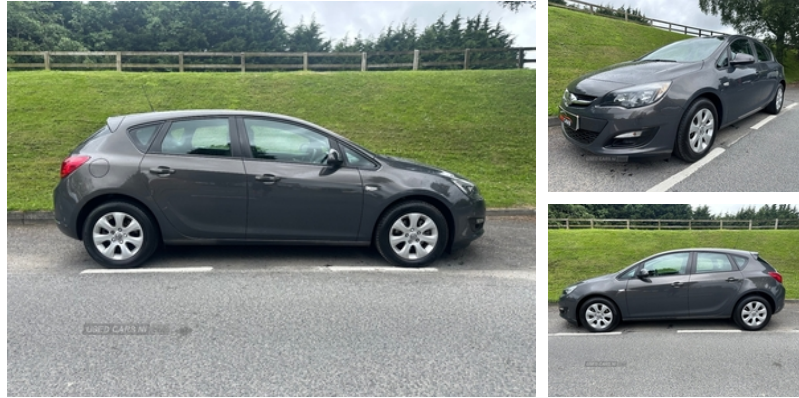




199 Mill Street, Newtownards, bt23 4ln  
07729375135

**Vauxhall Astra 1.6 CDTi 16V ecoFLEX 136  
Design 5dr | 2015**

\*\*\*LOW MILES\*\*\* \*\*\* FINANCE AVAILABLE\*\*\*



VERY POPULAR  
VAUXHALL ASTRA 1.6 CDTI ECOFLEX 5 DOOR HATCHBACK  
LOW MILES  
(NI) REGISTERED FROM NEW

COMES WITH

- \* FULL ELECTRICS
- \* REMOTE CENTRAL LOCKING X2 KEYS
- \* BLUETOOTH
- \* ALLOY WHEELS
- \* AIR CON
- \* DAB/AUX/USB
- \* TINTED GLASS
- \* PARKING SENSORS
- \* CRUISE CONTROL
- \* DAYTIME RUNNING LIGHTS
- \* MOTD
- \* 6 SPEED MANUAL

EXCELLENT CONDITION THROUGHOUT  
COMES FULLY SERVICED  
COMES FULLY VALETED  
PART EXCHANGE WELCOME  
VERY ECONOMICAL  
LOW TAX  
IDEAL 5 DOOR HATCHBACK  
DRIVES PERFECT  
WARRANTY AVAILABLE  
FREE 12 MONTH RAC BREAKDOWN COVER INCLUDED

PLEASE NOTE

VIEWING BY APPOINTMENT  
FINANCE ARRANGED SAME DAY  
ALL CARS CAN BE DELIVERED  
ALL CARS HPI CHECKED

ALL FINANCE SUBJECT TO STATUS

**£6,895**

**£7395**

<b>Miles:</b>	49000
<b>Fuel Type:</b>	Diesel
<b>Transmission:</b>	Manual
<b>Colour:</b>	Grey
<b>Engine Size:</b>	1598
<b>CO2 Emission:</b>	104
<b>Tax Band:</b>	B (£20 p/a)
<b>Body Style:</b>	Hatchback
<b>Insurance group:</b>	18E
<b>Reg:</b>	VFZ7646

**Technical Specs**

**DIMENSIONS**

<b>Length:</b>	4419mm
<b>Width:</b>	1814mm
<b>Height:</b>	1510mm
<b>Seats:</b>	5
<b>Luggage Capacity (Seats Up):</b>	351L
<b>Gross Weight:</b>	2010KG

**PERFORMANCE & ECONOMY**

<b>Fuel Consum. (Urban Cold):</b>	61.4MPG
<b>Fuel Consum. (Extra Urban):</b>	78.5MPG
<b>Fuel Consum. (Combined):</b>	72.4MPG
<b>Fuel Tank Capacity:</b>	56L
<b>Number Of Gears:</b>	6 SPEED
<b>Top Speed:</b>	125MPH
<b>Acceleration 0-100 km/h:</b>	9.7s
<b>Engine Power BHP:</b>	134.1BHP

## **Vehicle Features**

2 way active front head restraints, 3x3 point rear seatbelts, 60/40 split rear seats, ABS, Adaptive brake lights, Black bodyside mouldings, Body colour door handles, Body coloured bumpers, Body coloured door mirrors, Centre console cupholders, Chrome bezelled steering wheel, Cornering brake control, Cruise control + speed limiter, Curtain airbags, Driver's seat height adjuster, Driver/Front Passenger airbags, Electrically adjustable and heated door mirrors, Electric front windows, Emergency brake assist, ESP, Front seat back storage pockets, Height adjustable front seatbelts, Immobiliser, Isofix system on outer rear seats, PAS, Passenger airbag deactivate switch, Reach + rake adjustable steering column, Rear headrests, Rear wiper, Remote central deadlocking, Service interval indicator, Side airbags, Steering wheel mounted audio controls, storage tray and ashtray, Traction control, Two tone jet black/dolomite pearl light interior trim, Tyre pressure monitoring system